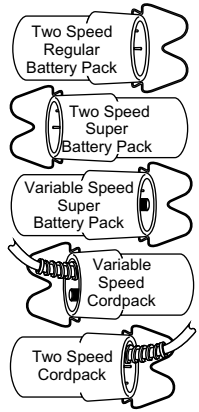
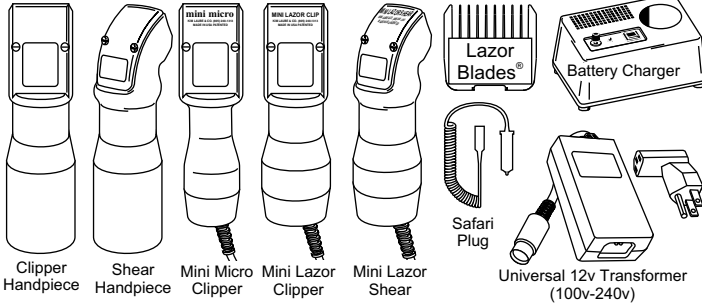




OWNERS MANUAL FOR LAUBE PRODUCTS



WARRANTY • SERVICE • MAINTENANCE MANUAL

SAVE THESE INSTRUCTIONS:

THIS CLIPPER HAS BEEN DESIGNED FOR COMMERCIAL USE.

These products are for professional use only. Read all instructions before operating LAUBE Professional Clipper Equipment. The LAUBE Clipper uses all snap on style blades.

CONGRATULATIONS! You have purchased the absolute finest clipper available. The LAUBE clipper is the most powerful, convenient, cordless/cord option, quiet, two-speed, variable speed, quick charge, Hi-Tech Clipper in the world. Patented, and Patents Pending.

DANGERS:

1. DO NOT place any electrical appliance or equipment where it can fall into water or other liquid area such as tub or bathing sink.
2. NEVER reach for any electrical appliance that may have fallen into water or any other liquid to avoid electric shock.
3. NEVER use in bathing area or while washing wet animals, to avoid electric shock.
4. ALWAYS unplug from electrical outlet by pulling on the plug rather than the cord when disconnecting to avoid damage, shock, or fire. Always unplug appliance immediately after using. Never pull on electrical plug to remove cordpack. Always use pull bail to remove cordpack and battery pack from clipper/shear housing.
5. ALWAYS unplug before cleaning, servicing, or installing parts. Servicing should only be done by factory authorized service centers. Do not disassemble clipper or cordpack to avoid electrical shock or burn.
6. DO NOT operate clipper or cordpack with damaged cord or plug, or if damaged, dropped, hit or exposed to any liquid, rain, snow or water.
7. DO NOT use undersized wire. In the event you choose to use an extension cord, 16 gauge is the minimum wire size for LAUBE Clippers/Shears. To avoid fire, and electrical shock, do not use incompatible, old, damaged, or underrated extension cords.
8. CHILDREN OR HANDICAPPED INDIVIDUALS using Laube products must be supervised by a professional at all times. **Never** leave children or handicapped individuals unattended, with access to professional equipment.
9. NEVER use any appliance or component of an appliance in any manner except for that which it was designed. Do Not make alterations to any appliance or component which may lead to personal or environmental harm. Never use a defective unit or component.
10. NEVER touch terminals with any conductive material. Never throw LAUBE equipment.

SEATING-IN PERIOD

As with most high performance equipment, the Laube Clipper Motor has a seating in period. The speed of the motor may fluctuate from 4000 to 5000 rpm during the first 30 days of use. This is a normal occurrence and does not need repair or warrant cause for alarm. The clipper is fully functional during this time

Visit Kim Laube on the web www.kimlaubeco.com or email us at email@kimlaubeco.com

HOW TO USE YOUR LAUBE LAZOR CLIPPER/SHEAR

1. Insert LAUBE Battery pack into the back side of clipper, line up locating rails and snap battery pack in with a firm press. This is designed to be a snug, firm fit.
2. Switch to 'ON' for operation and switch to 'LO' or 'HI' speed as desired. As always, snap on blade with clipper operating in the 'ON' and 'LO' position.
3. To change battery pack, or to remove for recharging, simply pull the battery pack out by holding on to the clipper and pulling firmly on the battery pack Pull Bale Hanger. This will become easier as you use the product more often.
4. For servicing use only factory authorized service centers.
5. You have two styles of battery packs to choose from. The first being a Two speed the other being a Variable speed. Both use the same LAUBE Charger. Determine which battery you have, to charge properly.

HOW TO USE YOUR LAUBE MINI CLIPPER/SHEAR™

1. Plug 12 volt transformer into appropriate wall outlet. Then plug transformer into clipper.
2. Always snap on blade with clipper operating in the "ON" position.
3. To keep blade cool see diagram on back page.
4. The Laube Mini clip will make a clicking sound when the lever needs to be replaced.
For directions see *Trouble Shooting the Laube Clipper*.
5. The Laube Mini clip can also be operated out of your car with the use of the Laube Safari Plug.

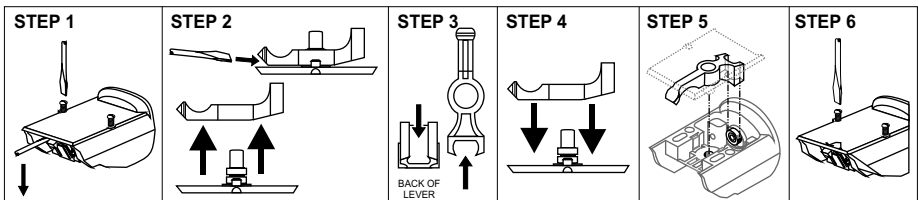
LAUBE CLIPPER/SHEAR MAINTENANCE

All maintenance or service is done with the clipper unplugged, and with the battery out of clipper. Below is a list of maintenance signals for your clipper. Regular usage will require regular lever changes and occasional tune-up kit, for optimum performance. All parts wear according to usage, there is no time table or limit to change parts, or service. Wearable parts are not covered under warranty. Do not run clippers with worn out parts, this causes damage to motor and lever bearings.

TROUBLE SHOOTING THE LAUBE CLIPPER

<i>Situation</i>	<i>Solution</i>
WORN LEVER	Replace worn lever. Look for clipper performance to drop off. Listen for tapping, clicking sound while clipping (see Lever Replacement Diagram).
WORN LEVER BEARING	If you have replaced your lever and clicking tapping noise still exist or poor clipper performance still exist, you may need to install a tune up kit. Available from authorized service centers or factory.
BLADE HEAT	In the low speed, the Laube Clipper runs the same speed as ordinary clippers; in high speed the Laube Clipper runs about twice as fast as ordinary clipper. Thus, your blades may run hotter than average. To remedy this: <ol style="list-style-type: none">A) Operate clipper in low speed whenever possible.B) Loosen blade tension spring (Do Not Loosen Blade Screws). See Diagram 3 on back. Consult your blade sharpener.C) Use Kim Laube & Co. Mr. Lube-N-Cool™ blade coolant. Follow all directions on can. Avoid direct contact of any coolant to clippers, combs, or other Laube equipment. Always remove blade for proper cooling and cleaning. Blade Coolants Will Damage Plastics.D) Change blade more frequently.E) Lubricate blade with Dr. Slick™ or use Laube Blade Dip™ to cool and clean.

LEVER REPLACEMENT DIAGRAM



Replace the lever; when it becomes worn, when the clippers performance drops off, when blade has tracking problems, or when tapping or clicking noises occur.

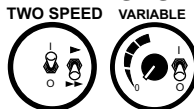
TO REPLACE LEVER:

- STEP 1)** Unscrew nameplate screws (retain for reuse) and insert screw driver below where lever protrudes, using the hinge for leverage, pry nameplate from housing (nameplate is snap fit).
- STEP 2)** Carefully pry lever off nameplate with screw driver (Do not damage the nameplate bearings).
- STEP 3)** Add grease to slot of *new* lever.
- STEP 4)** Attach new lever onto nameplate pressing firmly till snap fit is achieved.
- STEP 5)** Attach nameplate (with lever) into clipper housing, be sure bearing lines up with lever slot.
- STEP 6)** Re-attach nameplate screws.

HOW TO USE YOUR LAUBE CHARGER

1. Plug charger into proper electrical outlet after reading all instructions. Labels, manual and instructions on bottom of charger. 100-120 V. A. C. 50-60 H. Z. Also available in 220-240 V.A.C. 50-60 H. Z.
- 2a. If you are charging a TWO SPEED Battery pack, make sure the battery pack switch is in the "ON" and "HI" positions (*see diagram*). Two Speed Battery packs will not charge properly with switches in any other position.
- 2b. If you are charging a VARIABLE SPEED Battery pack, make sure the battery pack switch is in the off position (*see diagram*). The speed control knob can be in any position.
3. Firmly place battery pack into battery charger. Press start button. The charging light will turn on when battery is charging. If light shuts off immediately, press circuit breaker and then the start button. If battery does not take a charge, be sure the battery pack switch is in the "ON" position and "HI". You may need to wait for the battery pack or charger to cool down for a while, then reinsert and charge. Some battery packs may require several charges to accomplish a full charge.
4. Never keep any buttons pushed down on your Laube Battery Charger to avoid malfunction. Your battery pack needs to be charged before initial use. Always unplug charger after use.
5. Allow 10 minutes or more between charges for your battery charger to cool down before charging another battery. A fan blowing on the charger while charging will keep charger cool.
6. Damaged, worn out, or over heated battery packs will not accept a charge and may cause damage to the charger.
7. Charging time per battery will vary according to size of the battery pack, temperature, condition of battery pack, usage, and other individual circumstances. Charging time may vary from 25 minutes to approximately 2.5 hours.

**Switch position
for charging**



TROUBLE SHOOTING THE LAUBE BATTERY PACK/CHARGER

Situation

Solution

BATTERY NOT CHARGING OR CHARGE LIFE DECREASING.

- 1) Let battery cool completely one hour, then recharge.
- 2) Adjust battery snap connectors. (Consult Service Center)
- 3) All Laube batteries have a double thermal safety shut off set at 113°F (internal temp.) to protect the batteries from excessive heat damage. For best results in the summer time or in hot climates allow the batteries to cool completely after charging or clipping. Keep out of direct heat or sunlight. Store in a cool dry place. More than one battery may be necessary for continual clipping. If problem still exist, contact the factory for an authorized service center near you. **NOTE:** Any maintenance not explained in this manual should be performed by a factory authorized service center. Always use Genuine Kim Laube & Co. Replacement Parts.

Laube Battery Packs use a nickel-cadmium (NI-Cd) battery, which must be disposed of properly. In some states it is illegal to dispose of this battery in the trash.

Call 1 (800) BATTERY (800-822-8837) for your nearest NI-CAD recycling site.

INSTRUCTIONS CONCERNING THE DISPOSAL OF USED BATTERY PACKS.

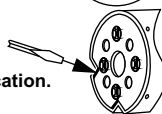
Ensure to dispose of the battery pack in an environmentally friendly manner when it has reached the end of its operational life.

To Remove battery cells from housing.

1. Make sure battery pack is fully discharged.
2. Remove battery pack from clipper.
3. Remove switch nuts from top side of battery pack.
4. With a screw driver pry open the battery pack cover cap and slide out battery assembly.
5. One at a time cut each wire from battery cell assembly.
6. Return the battery cell assembly to a proper disposal location.



Step 3
Remove
switch nuts



Step 4
Pry open
cover cap



Note: If any questions are not covered, please feel free to call our factory service department at (805) 240-1313

Visit Kim Laube on the web www.kimlaubeco.com or email us at email@kimlaubeco.com

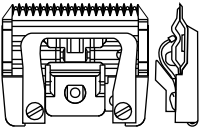
Now Available !!!

LAZOR BLADES®

Disposable Blade Cartridge System

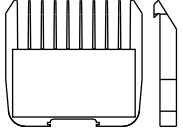
Guaranteed to out perform any blade in its class!!⁽¹⁾

Blade Cartridge



MSRP \$6.95

Blade Housing



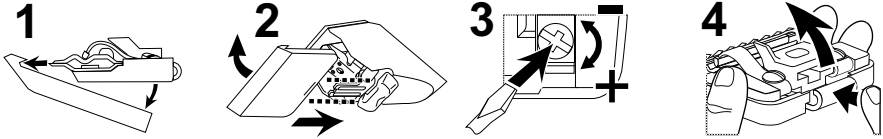
MSRP \$3.50

- Blade Housings come in 27²⁾ standard and special sizes.
- Blade Cartridges come in 3²⁾ sizes (29, 30 & 40 Surgical)
- All Housings and Blade Cartridges are interchangeable.
- Exclusive longer lasting cutting adjustment.
- Blade Housings only work with Laube Lazor Blades Disposable Blade Cartridges.
- Blade Housings are reusable.
- Cartridges have hardened carbon steel blades.
- Smooth, high precision clipping accuracy. No tracks!
- Cool running thermal engineering resin housing.
- Sold only through fine distributors.
- U.S. and International Patents Pending. Made in USA.
- Systems fit all standard snap-on style blade clippers including the following Clippers: Laube®, Wahl® KM-1, Andis® AG, BG, MBG, Oster® A5® and Thrive® 900⁽³⁾

(1)The Laube Lazor Blades Disposable Blade Cartridge System is guaranteed to out perform any other blade in its class with like size, weight, style, features, price, clip time and quality. (2)Available in scheduled release. Call for details (3) Laube® Lazor CX® Lazor Dx® and Wahl® KM-1 are registered trademarks of the Wahl Clipper Corporation and its subsidiaries. Andis® AG, BG, AGR, BGR, & MBG are trademarks of Andis Company. Thrive® 900 is a registered trademark of Daito Company, A5® & Golden A5® are registered trademarks of Sunbeam Corporation or its affiliates, which companies are not affiliated with Kim Laube & Co.

LAUBE LAZOR BLADES® INSTRUCTIONS

To install blade cartridge into housing and attach to clipper: **1)** insert blade, teeth first, into blade housing, then snap in. **2)** snap blade on to clipper firmly while clipper is on low. **3)** to adjust blade tension, loosen or tighten both screws evenly. **4)** to remove blade from housing, hold as shown and push release plate in then lift cartridge up and out. Adjusting blade tension helps maximize cutting life & minimize temperature. **Laube Disposable Lazor Blades® Cartridges work independently or with Cartridge Housings. Blade Housings only work with Laube Lazor Blades® Cartridges.** WARRANTY VOID IF DISASSEMBLED



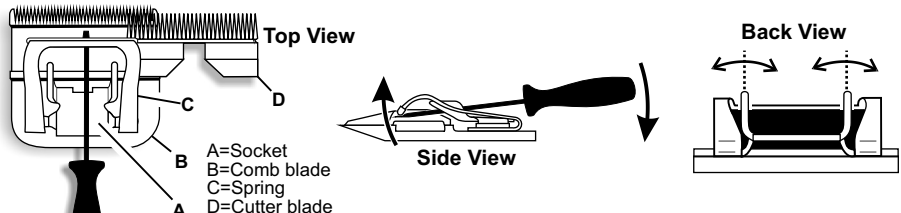
*LAUBE LAZOR BLADES® CARTRIDGES FIT MOST SNAP-ON STYLE CLIPPERS, INCLUDING: LAUBE®, WAHL KM1®, MOSER™, ANDIS AG, BG® & OSTER A5® (ANDIS AG, BG, ARE TRADEMARKS OF ANDIS CORP. OSTER A5® IS A REGISTERED TRADEMARK OF SUNBEAM CORP. OR ITS AFFILIATES, WHICH COMPANIES ARE NOT AFFILIATED WITH KIM LAUBE & CO., INC.)

COMMON ADJUSTMENTS FOR OTHER SNAP-ON STYLE BLADES

Excessive blade heat is usually a result of over tightened blade tension. The cutter blade should slide back and forth fairly easily. Do not over loosen blade tension, this will cause blade to jam and not cut. NEVER loosen screws to relieve blade tension this will disturb blade alignment and cause possible harm to user. **Step 1)** Place blade flat on a table screw side down with teeth pointing away from you. **Step 2)** slide cutter blade to the right (see **top view diagram below**). **Step 3)** Place a flat head screwdriver between blade spring and comb blade (see **side view diagram below**). **Step 4)** Pry up on blade spring gently so as NOT to over loosen tension. If blade tension is still to tight repeat procedure.

WHAT IF BLADE RATTLES OR CHATTERS?

Place blade flat on a table screw side down, with the teeth pointing away from you. With a small pair of needle nose pliers adjust ears of socket so that they are straight up and down (see **back view**). Place blade on clipper hinge as normal making sure that your clipper is running on low speed. At first the blade will hard to latch. Keep applying pressure until blade locks on to the hinge or firmly seated. This operation will adjust blades to your clipper. If blade still chatters replace socket or call Laube Technical Support 805-240-1313.



Visit Kim Laube on the web www.kimlaubeco.com or email us at email@kimlaubeco.com